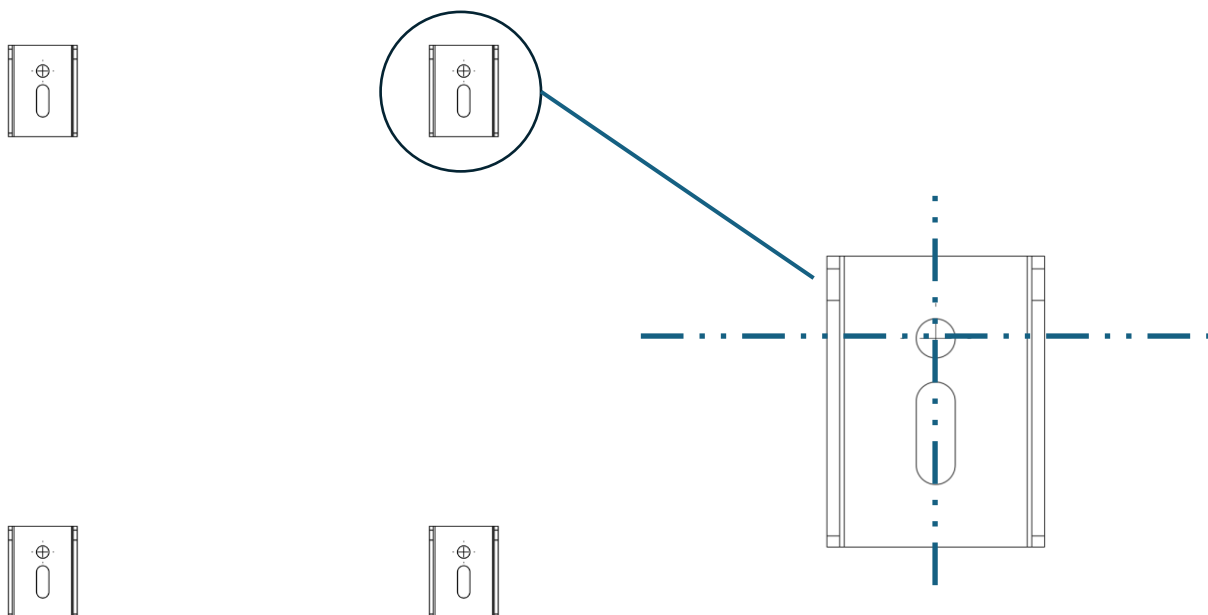


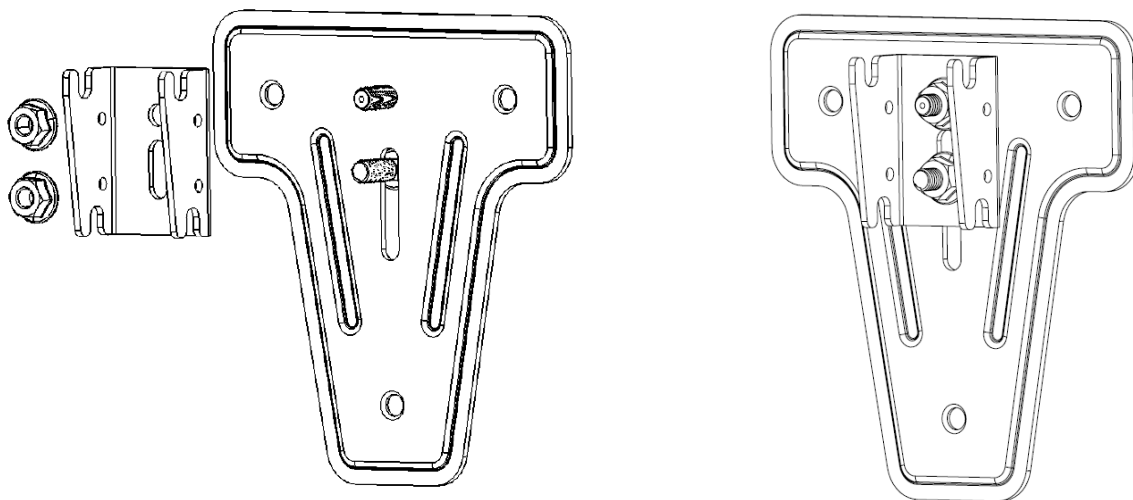
Instructions - RAD-SUPEX-W / RAD-SUPEX-A

1/ Mark out on the wall the position of the centre line and bottom of each bracket that came with your radiator.



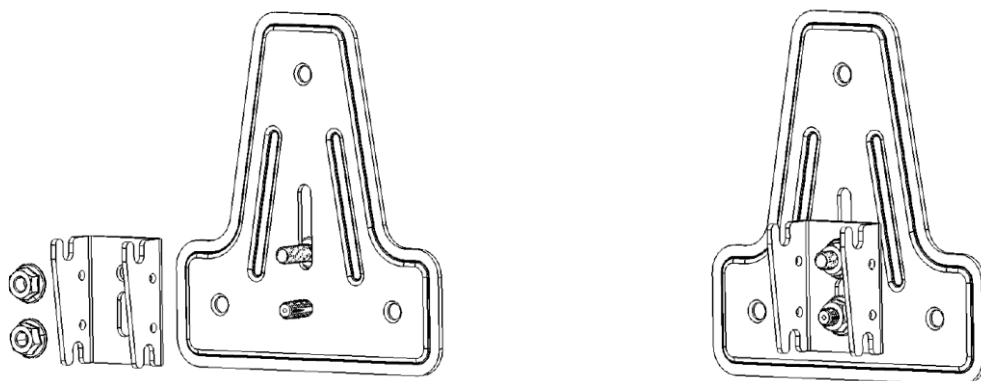
Marking the center line and position of top hole

2/ Assemble 2 radiator brackets to the Bullfix Support Brackets in the TOP configuration as shown below

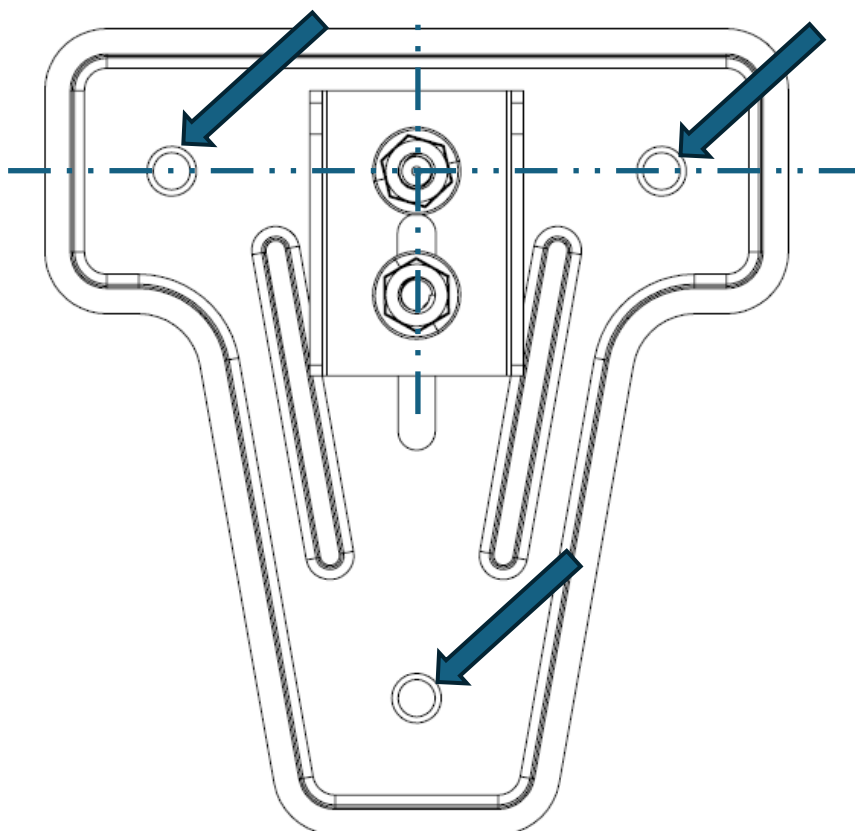


Instructions - RAD-SUP-W / RAD-SUP-A

3/ Assemble 2 radiator brackets to Bullfix Support Brackets in the BOTTOM configuration as shown below

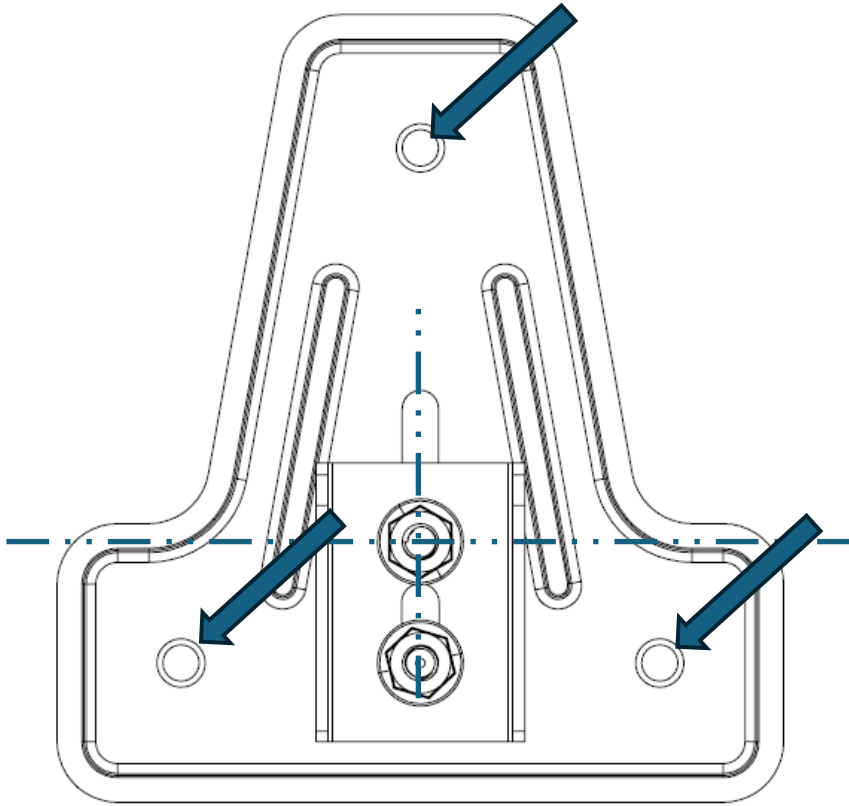


4/ Now position the TOP assemblies on to the top two positions that you marked on the wall and mark these 3 holes for drilling

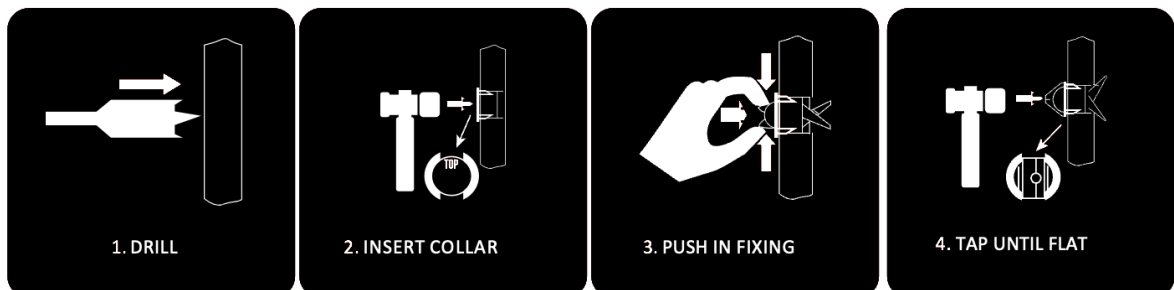


Instructions - RAD-SUP-W / RAD-SUP-A

5/ Now position the BOTTOM assemblies on to the bottom two positions that you marked on the wall and mark these 3 holes for drilling

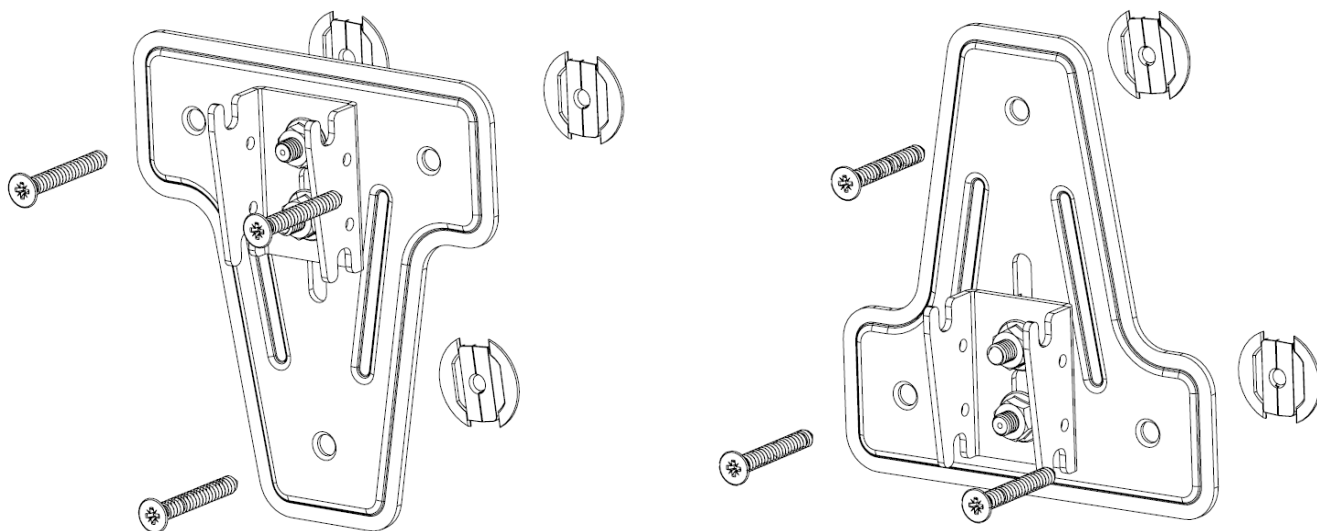


6/ Using a 20mm spade bit drill the 12 holes and insert Bullfix plasterboard fixings as illustrated



Instructions - RAD-SUP-W / RAD-SUP-A

7/ Now screw the 2 x TOP bracket assemblies and the 2 x BOTTOM assemblies to the wall using the screws supplied



8/ Brackets should now be ready for you to hang your radiator on.

