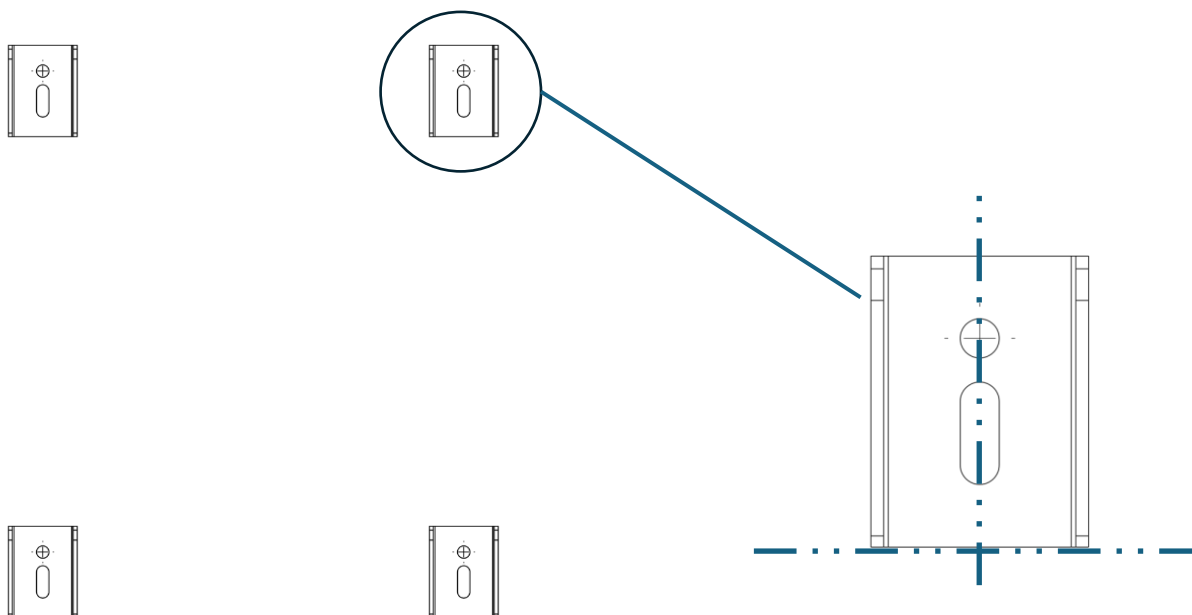


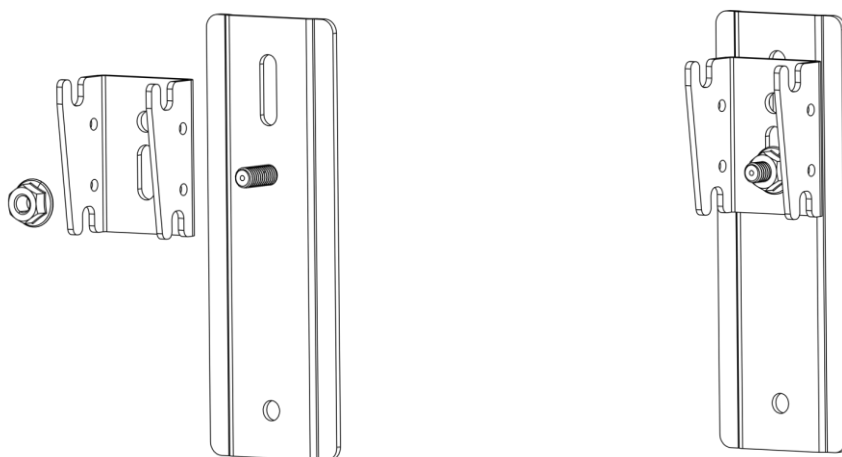
Instructions - RAD-SUP-W / RAD-SUP-A

1/ Mark out on the wall the position of the centre line and bottom of each bracket that came with your radiator.



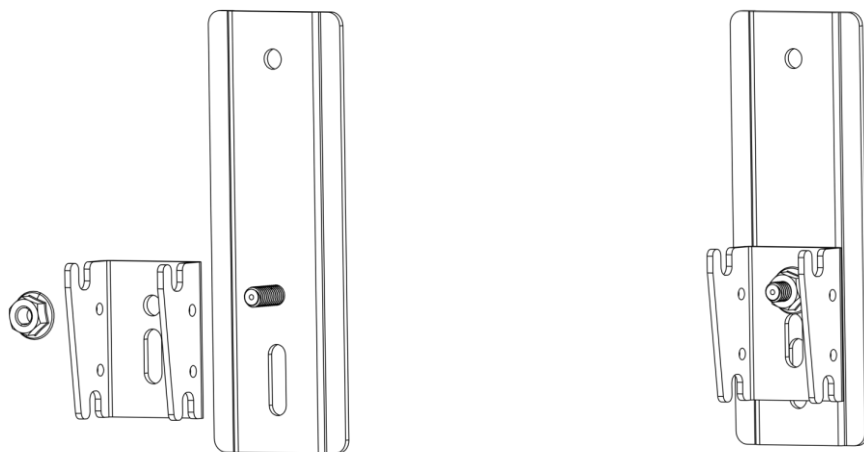
Marking the centre line and
the bottom of the bracket

2/ Assemble 2 radiator brackets to the Bullfix Support Brackets in the TOP configuration as shown below

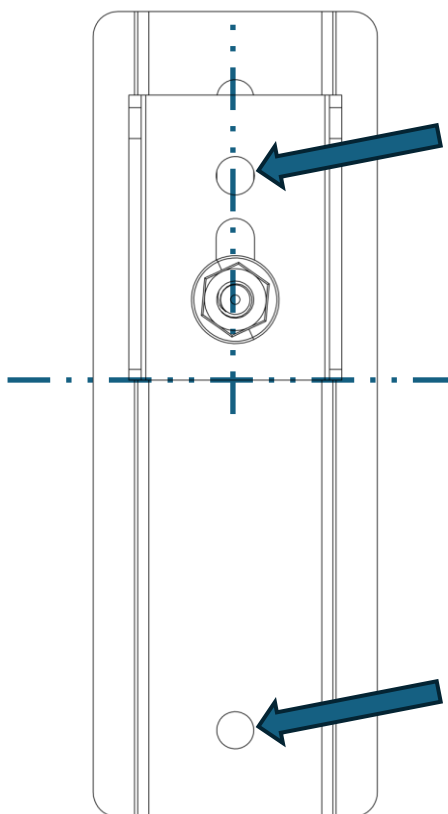


Instructions - RAD-SUP-W / RAD-SUP-A

3/ Assemble 2 radiator brackets to Bullfix Support Brackets in the BOTTOM configuration as shown below

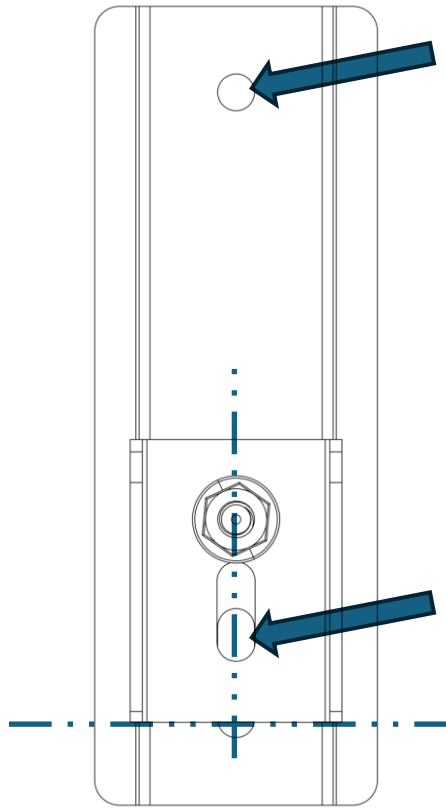


4/ Now position the TOP assemblies on to the top two positions that you marked on the wall and mark these 2 holes for drilling

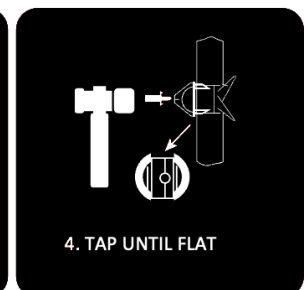
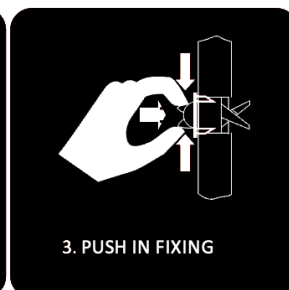
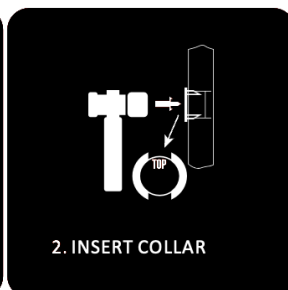
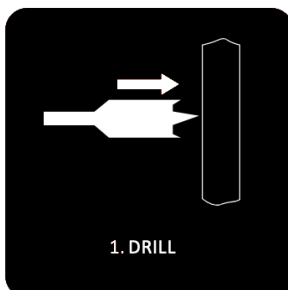


Instructions - RAD-SUP-W / RAD-SUP-A

5/ Now position the BOTTOM assemblies on to the bottom two positions that you marked on the wall and mark these 2 holes for drilling

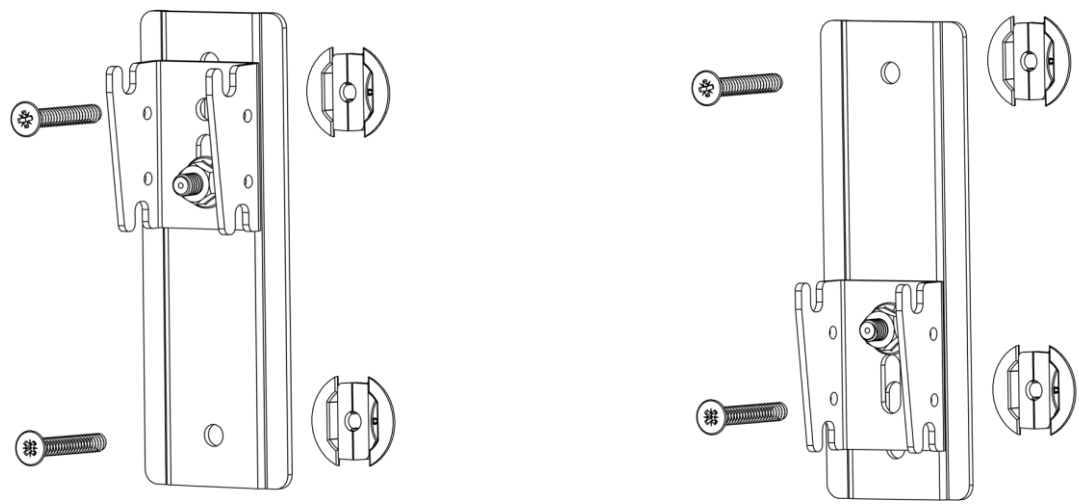


6/ Using a 20mm spade bit drill the 8 holes and insert Bullfix plasterboard fixings as illustrated



Instructions - RAD-SUP-W / RAD-SUP-A

7/ Now screw the 2 x TOP bracket assemblies and the 2 x BOTTOM assemblies to the wall using the screws supplied



8/ Brackets should now be ready for you to hang your radiator on.

